

FEATURES

- ❖ Rugged
- ❖ Reusable
- ❖ Submersible to 150 ft
- ❖ Programmable start time
- ❖ Real-time operation
- ❖ N.I.S.T. traceable
- ❖ User-friendly
- ❖ Low cost

APPLICATIONS

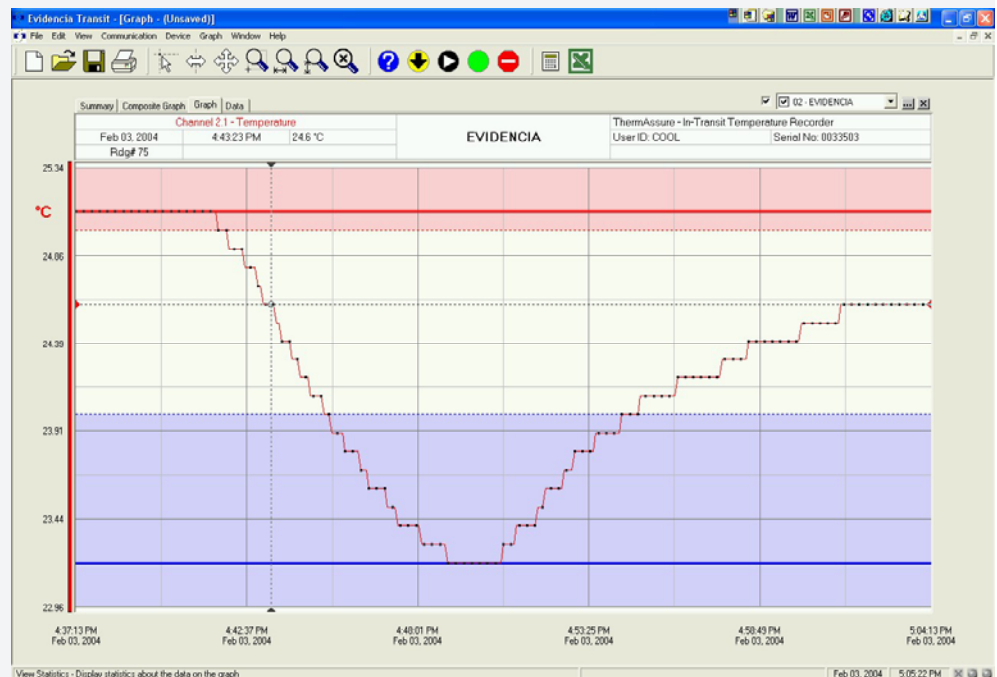
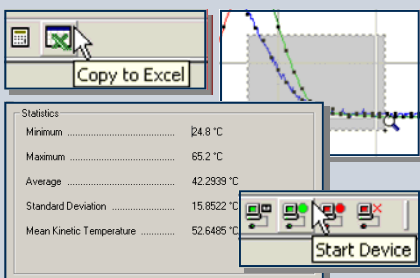
- ❖ Implement HACCP Programs
- ❖ Autoclave Verification
- ❖ Food preparation and processing
- ❖ Environmental studies
- ❖ Well monitoring
- ❖ Dish washer testing
- ❖ Hostile environment monitoring
- ❖ Medical/Pharmaceutical



The PROTO TEMP1000 temperature logger is a rugged, water proof, battery powered, stand alone device which can be used to automatically record temperatures between -40 °C and 125 °C. This all in one compact, portable, easy to use device is able to measure and record up to 32,767 temperature measurements. The PROTO TEMP1000 is ideal for use in harsh environments. Its real time clock ensures that all the data is time and date stamped. The storage medium is non-volatile solid state memory, providing maximum data security even if the battery becomes discharged. The device can be started and stopped directly from your computer and its small size allows it to fit almost anywhere. The PROTO TEMP1000 makes data retrieval quick and easy. Simply plug the device into an empty COM port and our user-friendly software does the rest.

SOFTWARE

Evidencia's Data Recorder Software is an easy to use Windows-based software package that allows the user to effortlessly collect, display and analyze data. A variety of powerful tools allow you to examine, export, and print professional looking data with just a click of the mouse.



Demo our software at www.evidencia.biz/downloads

PROTO TEMP1000 SPECIFICATIONS

Temperature Sensor: Semiconductor	Calibration: Digital calibration through software
Temperature Range: -40 °C to +125 °C	Calibration Date: Automatically recorded within device
Temperature Resolution: 0.1 °C	Power: 3.6V lithium battery included
Calibrated Accuracy: ±0.5 °C (0 to +50°C)	User Replaceable Battery: 1 year typical at 25 °C, 1 minute reading intervals
Start Time: Software programmable start time and date. Up to six months in advance	Data Format: Date and time stamped °C, °F, °K, °R
Real Time Recording: May be used with PC to monitor and record data in real time	Time Accuracy: ±1 minute/month at 20°C (RS232 cable not in use)
Memory: 32,767 readings	Computer Interface: PC serial or RS232C COM (Interface cable required); 2400 baud
Reading Interval: 1 reading every 2 seconds to 1 every 12 hours	Software: Windows 95/98/ME/NT/2000/XP based software
	Operating Environment: -40 °C to +80 °C, 0 to 100 %RH
	Dimensions: 4.3" X 1.0" Dia.(108mm x 26mm)
	Weight (Aluminum) : 4 oz (110 g)
	Weight (Stainless) : 8 oz (230 g)

PROTO TEMP1000 SOFTWARE FEATURES

Multiple Graphs: Simultaneously analyze data from several units or deployments; easily switch to a single data series	Statistics: Calculate averages, min, max, standard deviation, and mean kinetic temperature with the touch of a button
Real-Time Recording: Collect and display data in real-time while continuing to log	Export Data: Export data in a variety of common formats, or switch to Excel with a single click
Graphical Cursor: One click displays readings by time, value, parameter or sample number	Calibration: Fully digital calibration function automatically stores parameters in device
Data Table: Instantly access tabular view for detailed dates, times, values, and annotations	Logger Configuration: Easy set up and launch of data loggers with immediate or delayed start, preferred sample rate, and device ID
Scaling Options: Autoscale function fits data to the screen, or allows user to manually enter their own values	Communications: Automatically sets up communications port, or lets user set configuration
Formatting Options: Change colors, line styles, plotting options, show or hide channels in an instant	Printing: Automatically print graphical or tabular data

**As part of our commitment to continuous product improvement, Evidencia reserves the right to change product specifications without notice.

ORDERING INFORMATION

Model	Description
PROTO TEMP1000	Rugged Temperature Recorder
IFC110	Software, manual and 9-pin computer interface cable
N.I.S.T. Cert	N.I.S.T. Calibration Certificate

ASK ABOUT OUR OTHER DATA RECORDERS

Temperature	pH
Humidity	Level
Pressure	Shock/Vibration
Bridge/Strain	Submersible
Current	Intrinsically Safe
Pulse/Event	RF Transmitters
Voltage	Multi-parameter



505 Tennessee Street, Ste. 502, Memphis TN 38103, USA
 Phone: +1 (901) 529-9382 Fax: +1 (901) 529-9197
www.evidencia.biz  info@evidencia.biz